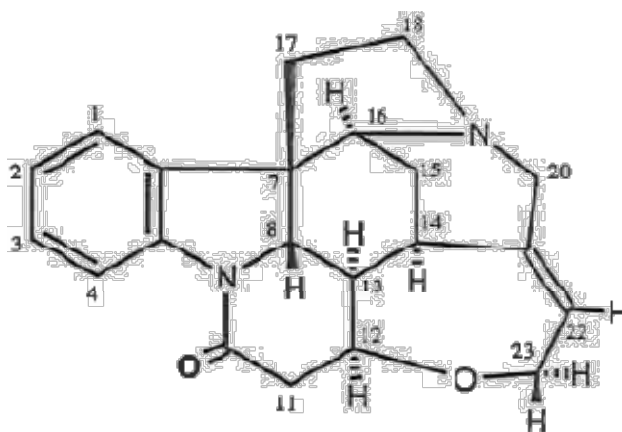


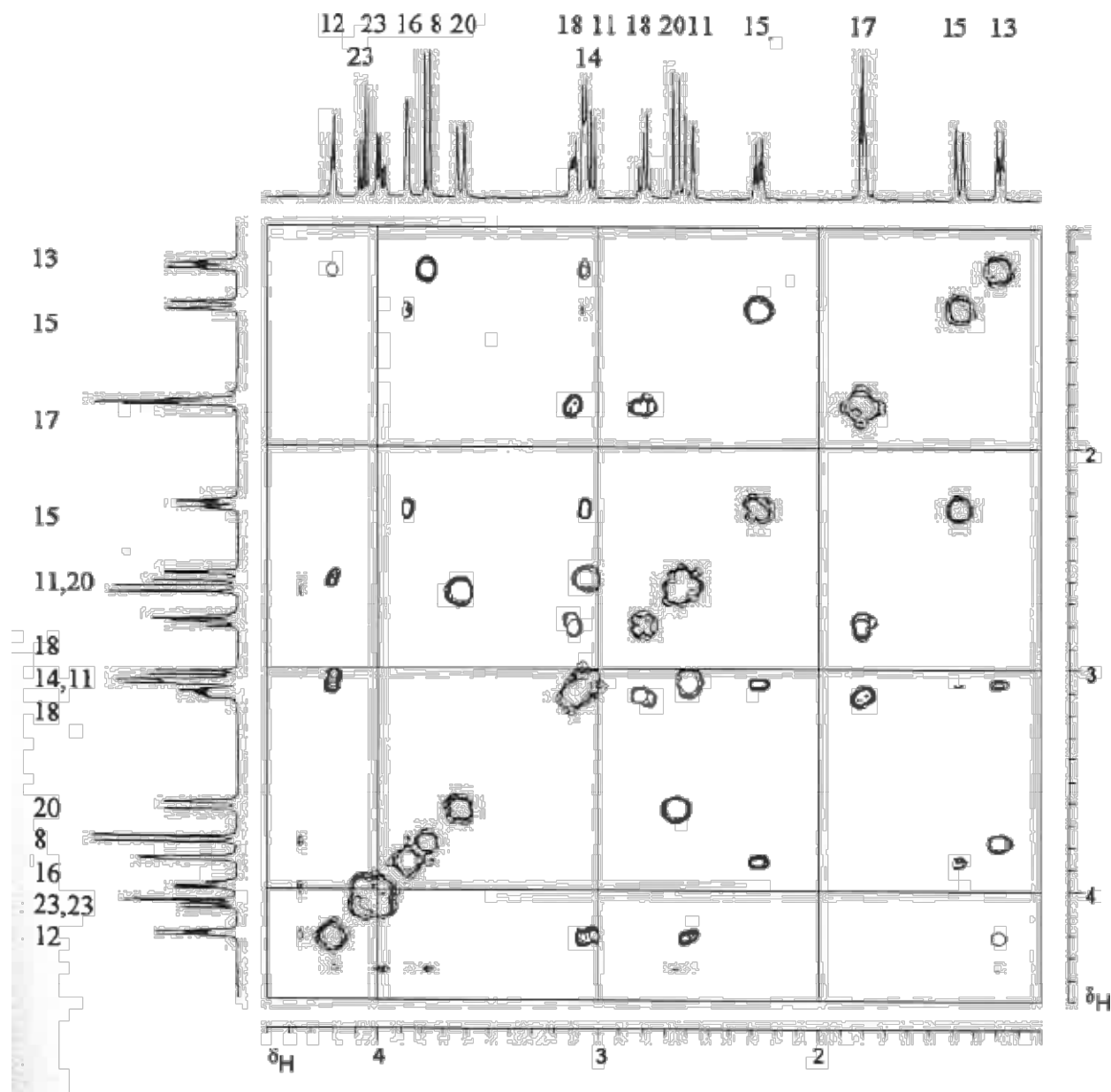
PROBLEM SET 4, Phcg 631

1) See below (A) the structure of strychnine, (B) its COSY, (C) TOCSY and (D) NOESY spectra. Assign all three ^1H - ^1H spectra. Disregard noise, very weak and artifactual peaks.

(A)



(B)



(C)

22

12 23 8 20 18 11 18 11 15 17 15 13
16 14 20

